

Customer :

customer

Customer part :

customer part

Comment :

Comment

S1=0.9

S2=4.27

Tmax=401

Tp S2=440.0

PI=0.17

HI=514

Sample =5454.23

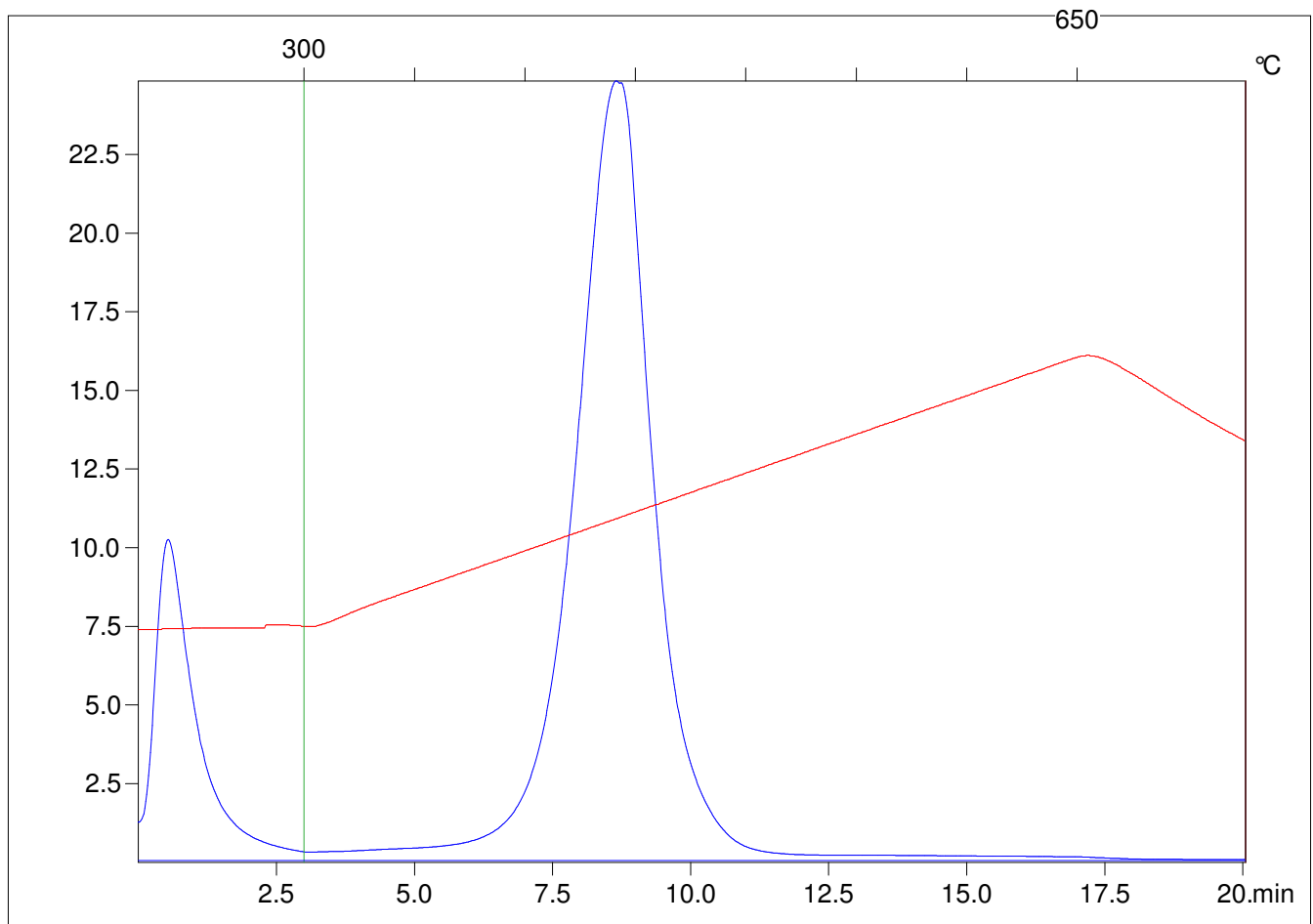
Method =Bulk Rock

Cycle=Basic

KFID(10\*9)=1167

Qty =70.5

TOC=0.83



C:\VINC\PK141015\PK027.R00 : FID pyrolysis graphic

State

Pyro Status

Oxi Status